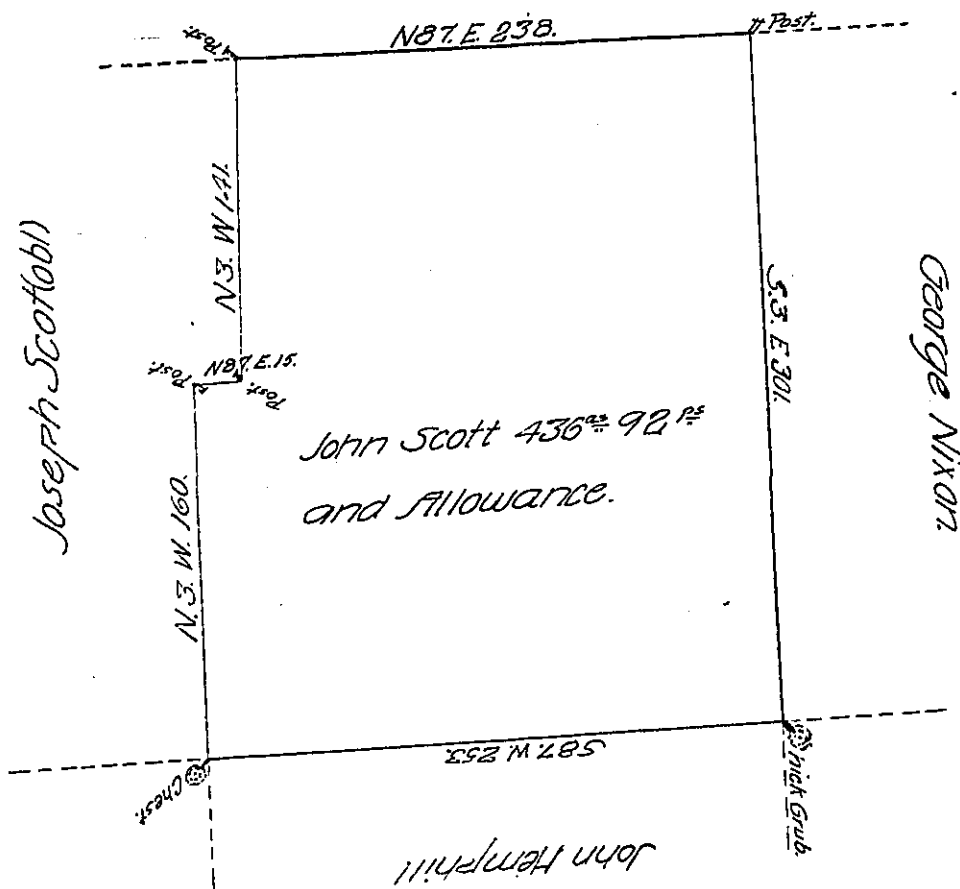


John Elder and
Sam^l Wallace.



The above is a draught of a tract of Land which was surveyed to John Scott on the 8th day of December 1806. By Virtue of his Warrant dated February 3rd 1794. Containing Four hundred thirty six acres 92^{ac} and allowance of Six $\frac{1}{2}$ Cte. Including the actual settlement and improvement of John Craig now situate in Butler County.

Ja^s Iriven D.S.

To Samuel Cockran Esq^r S.G. }
N.B. Pennsylvania }

It appears $\frac{1}{2}$ Barr of Warrant that this Warrant was Executed by my Predecessor John Moore Esq^r. which appears to be an Error this must be rectified by the S.G. or Board of Property it was Executed by him on (obl) Nixon Tract (obl) Ja^s I (obl)

IN TESTIMONY that the above is a copy of the original remaining on file in the Department of Internal Affairs of Pennsylvania, made conformably to an Act of Assembly approved the 16th day of February, 1833, I have hereunto set my Hand and caused the Seal of said Department to be affixed at Harrisburg, this Seventeenth day of December 1906

James A. Brown
Secretary of Internal Affairs